



LEAD THE WAY IN HEALTHCARE:

Graduate Programs Guide

Thank you for your interest in Hofstra University's School of Health Sciences (SHS)! Whether you want to rise more quickly in your current role or hit the ground running in a new career, our advanced degrees can give you an advantage.

Please take a moment to review our graduate options below. We look forward to having you join our vibrant community as we lead the way in preparing more effective and compassionate clinicians, evidence-based practitioners, policymakers, and advocates who promote health equity across the lifespan.

SHS GRADUATE HEALTHCARE PROGRAMS

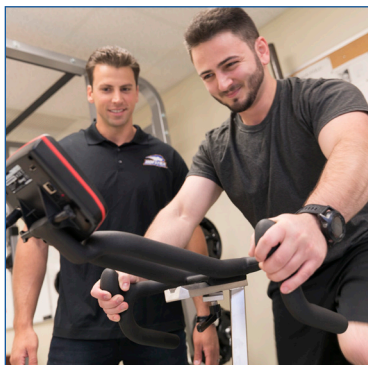
Get the degree or certificate you need to advance your career.

DEPARTMENT OF ALLIED HEALTH AND KINESIOLOGY

Learn about patient-centered care to enhance health, rehabilitation, and performance throughout the lifespan. Our training incorporates how to evaluate and develop programs to meet individuals' goals for daily living, including work, physical fitness, and daily living activities.

Get an up-close look at our degrees:

[Athletic Training, MS](#)



[Occupational Therapy, MS](#)



[Sports Science, MS](#)



"My goals and aspirations as an OT Practitioner are to work with children who have special needs as well as open a clinic in my neighborhood of Brownsville, New York. Opening a clinic in a lower socioeconomic neighborhood is very important to me because people who live in these neighborhoods are not afforded the same opportunities to health care as those who live in more prominent areas. This program will help me reach my goals by teaching me the skills I need to be a successful clinician, such as documentation and treatment techniques."

[Joelle DeLagarde, OTR-L](#)
Occupational Therapy, MS '20



DEPARTMENT OF COUNSELING AND MENTAL HEALTH PROFESSIONS

Hofstra University's counseling and therapeutic mental health programs prepare individuals to work as professional counselors, therapists, and human service practitioners who serve a variety of populations, from youth to aging populations, in a range of settings. Program faculty are committed to preparing multiculturally competent practitioners who are equipped to promote the mental health and personal efficacy of their clients and contribute to the improvement of social and educational systems. All of these programs prepare students for professional certification or licensure to practice in New York state.

Get an up-close look at our degrees:

[Creative Arts Therapy Counseling, MA](#)



[Marriage and Family Therapy, MA](#)



[Mental Health Counseling, MA](#)



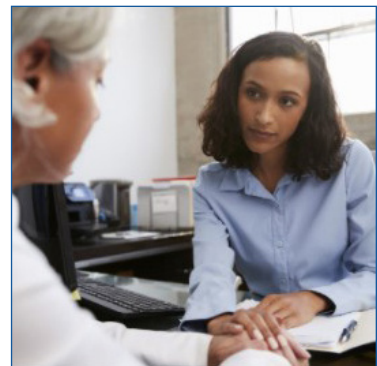
[Rehabilitation Counseling Graduate Programs](#)



[School Counselor, MSED](#)
[School Counseling, Adv. Cert.](#)



[Addiction and Substance Abuse, Adv. Cert.](#)



"I had a great experience with the faculty in the program at Hofstra. I found the staff to be supportive and encouraging, with faculty allowing each student to explore their own respective, unique identities as creative arts therapists."

Allison Williams, LCAT, ATR-BC
Creative Arts Therapy Counseling, MA '19



DEPARTMENT OF POPULATION HEALTH

Study wellness, health promotion, and disease prevention in preparation to work on interprofessional teams of administrators, researchers, clinicians, educators, social service providers, healthcare leaders, and policymakers to achieve improved health outcomes for all communities across the lifespan.

Get an up-close look at our degrees:

Health Administration

(on campus and online), MHA



Health Informatics, MS



Public Health, MPH



"I went into healthcare because I simply wanted to help others. At a young age I had a personal experience with a family member who underwent surgeries, countless doctors' appointments and therapy sessions. It was then I quickly realized that I wanted to be on the other side helping patients receive the best care they possibly can and put a smile on their faces."

Elyssa Guarnieri
Health Administration, MHA '20



DEPARTMENT OF SPEECH-LANGUAGE-HEARING SCIENCES

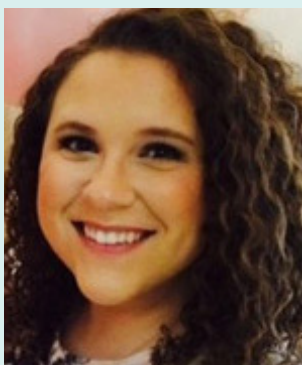
Become a more skilled, compassionate healthcare professional in the areas of speech-language pathology and audiology and their application to the diagnosis and treatment of diverse populations demonstrating communication disorders across the lifespan.

Get an up-close look at our degrees:

[Audiology, AuD](#)



[Speech-Language Pathology, MA](#)



"My experiences with the faculty in the Department have been amazing. They are all so intelligent and are willing to help you when you need it or don't understand something. I think it really benefits us as students that each professor specializes in something different. It gives us an incredible amount of background information for each of the classes, and it makes it easier to learn when the professor can give you real life examples or share their experiences."

[Alyssa Legnetti, CCC-SLP](#)
[Speech-Language Pathology, MA '16](#)

Ongoing assessment and development of new programs in the School of Health Sciences, such as Advanced Certificates in Gerontology: Healthy Aging and Addiction and Substance Abuse, help meet the evolving needs of patients and clients.

[SEE OUR ADVANCED CERTIFICATES](#)



BECOME A MORE COMPASSIONATE AND EFFECTIVE HEALTHCARE LEADER AT SHS

[Apply now to join us.](#) No GRE score is required for most programs and, once your application is complete, you'll receive:

- Automatic scholarship review
- An expedited interview process
- A priority decision turnaround

Have a question for us? We'll be happy to speak with you! Give us a call at 516-463-6480 or [send us an email](#). We look forward to the opportunity to prepare you to lead the way in a meaningful healthcare field!

8

STATE-OF-THE-ART LABORATORIES, INCLUDING A FULLY DIGITAL ANATOMY AND PHYSIOLOGY LAB

93%

OF GRADUATE STUDENTS PARTICIPATE IN TWO+ INTERNSHIPS OR CLINICAL EXPERIENCES

16%

OF ALL NEW JOBS CREATED IN THE NEXT 10 YEARS WILL BE IN THE HEALTHCARE INDUSTRY
U.S. Bureau of Labor Statistics

Top companies where students and alumni intern or are employed:

- Henry Schein
- Hospital for Special Surgery
- Infinity Health Care Management
- Ivy Prep Early Learning Academy
- Memorial Sloan Kettering Cancer Center
- Mental Health Association of Nassau County
- Mill Neck Manor School for the Deaf
- Nassau County Department of Health
- New York Health and Racquet Club
- New York City Department of Education
- Northwell Health
- Parker Jewish Institute for Health Care and Rehabilitation
- Ronald McDonald House Charities
- South Bay Wellness
- STARS Physical Therapy